

Stay tuned!
The meeting will begin shortly.



Local Concerns Meeting

Swanton BF 036-1(16)

Bridge 6 – Vermont Route 78 over Missiquoi River

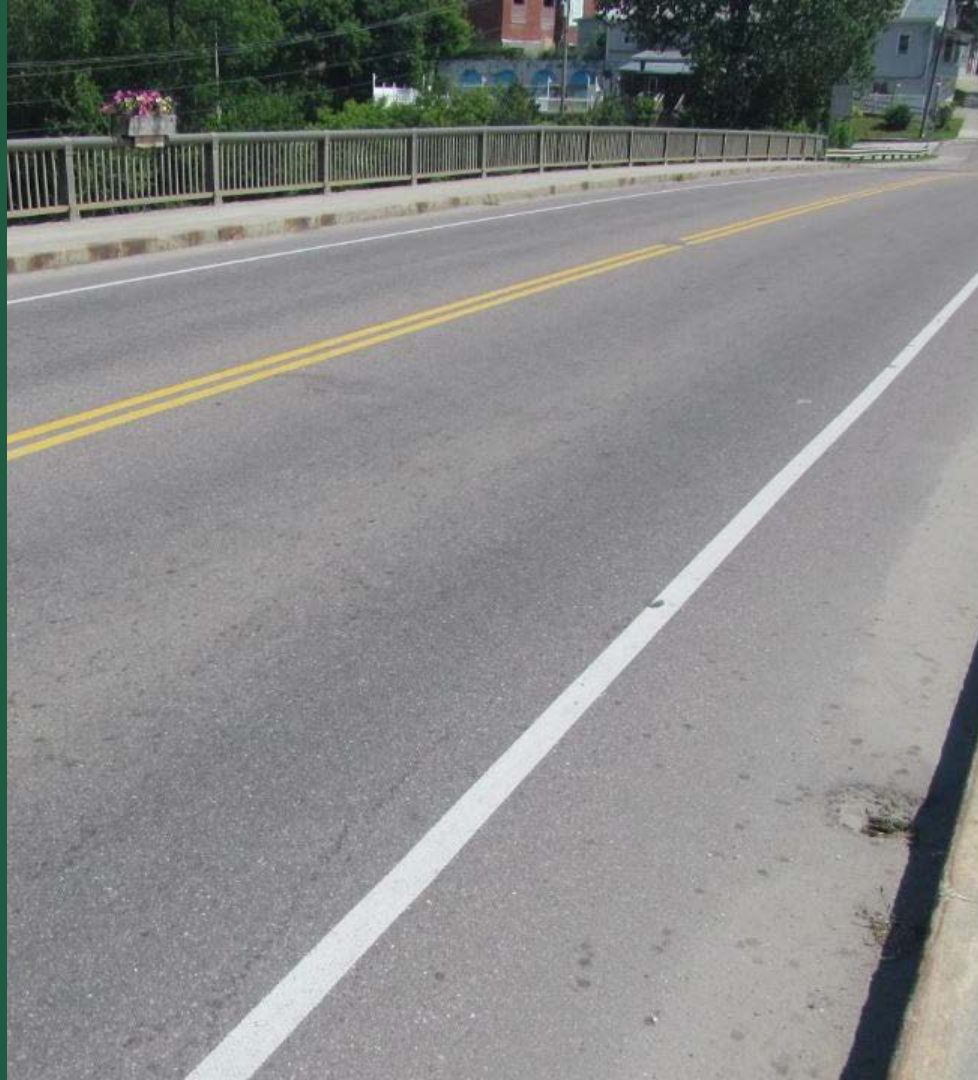
Village of Swanton

June 10, 2024



Agenda

1. Purpose & Need
2. Location Map
3. Existing Bridge Information
4. Inspection Findings
5. Project Alternatives
6. Resources & ROW
7. Anticipated Schedule & Next Steps
8. Your Input is Needed



Purpose & Need

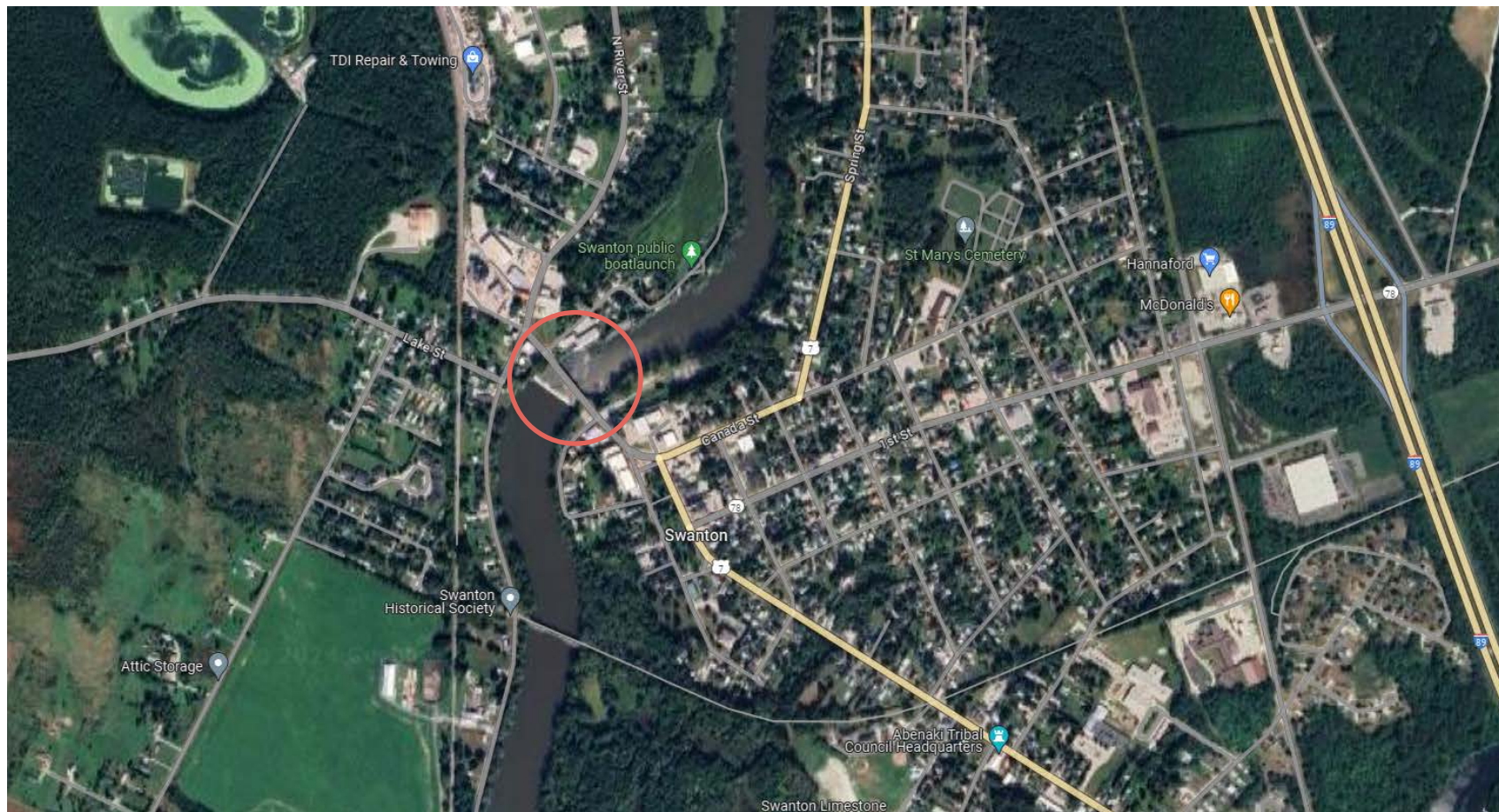
Purpose

The purpose of the Swanton BF 036-1(16) – Bridge 6 Project is to address the current structural deficiencies and ongoing deterioration of the bridge, which will improve the public safety for crossing the Missisquoi River.

Need (abridged)

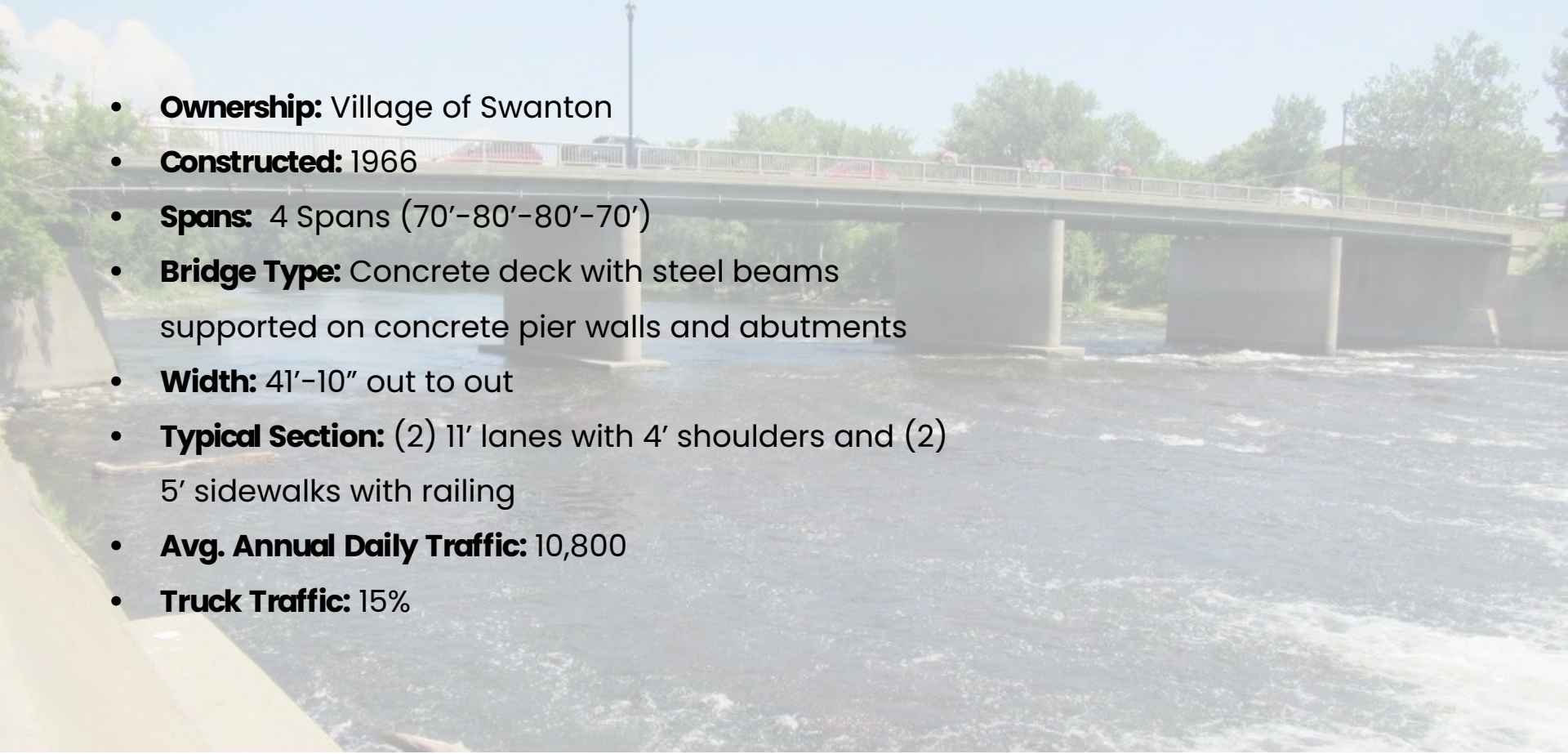
1. The condition of Bridge 6 needs to be improved to maintain public safety.
2. There is a need to provide safe and efficient roadway infrastructure for the Swanton Community at this location.

Location Map



Existing Bridge Information

- **Ownership:** Village of Swanton
- **Constructed:** 1966
- **Spans:** 4 Spans (70'-80'-80'-70')
- **Bridge Type:** Concrete deck with steel beams supported on concrete pier walls and abutments
- **Width:** 41'-10" out to out
- **Typical Section:** (2) 11' lanes with 4' shoulders and (2) 5' sidewalks with railing
- **Avg. Annual Daily Traffic:** 10,800
- **Truck Traffic:** 15%



Inspection Findings

- Deck = 6 Satisfactory
- Superstructure = 6 Satisfactory
- Substructure = 6 Satisfactory
- Channel = 8 Very Good

Condition Rating	Description
9	Excellent Condition
8	Very Good Condition
7	Good Condition
6	Satisfactory Condition
5	Fair Condition
4	Poor Condition
3	Serious Condition
2	Critical Condition
1	Imminent Failure Condition



Inspection Findings



Deck Joints
End Diaphragms
Beam Ends
Abutment Seats and
Backwall
Downspouts



Inspection Findings



Beam Ends
Bearings
Bridge Seat
Pier Walls



Project Alternatives

Deck Replacement

- New deck matching existing footprint, beams and substructure remain
- New railing, sidewalks, joints and pavement

Superstructure Replacement

- Same as deck replacement with new beams, substructure remains

Bridge Replacement

- Reduced number of spans (2-span)
- On alignment
- Off alignment

Maintenance of Traffic Options

- Staged with one lane alternating
- Closure with detour route
- Closure with temporary bridge

Initial Local Feedback

- The Swanton Community has agreed to consider the implementation of a full closure of the bridge given that it is typically the most efficient, cost effective and safest way to approach the rehabilitation or replacement.

Project Alternatives

Evaluation Criteria

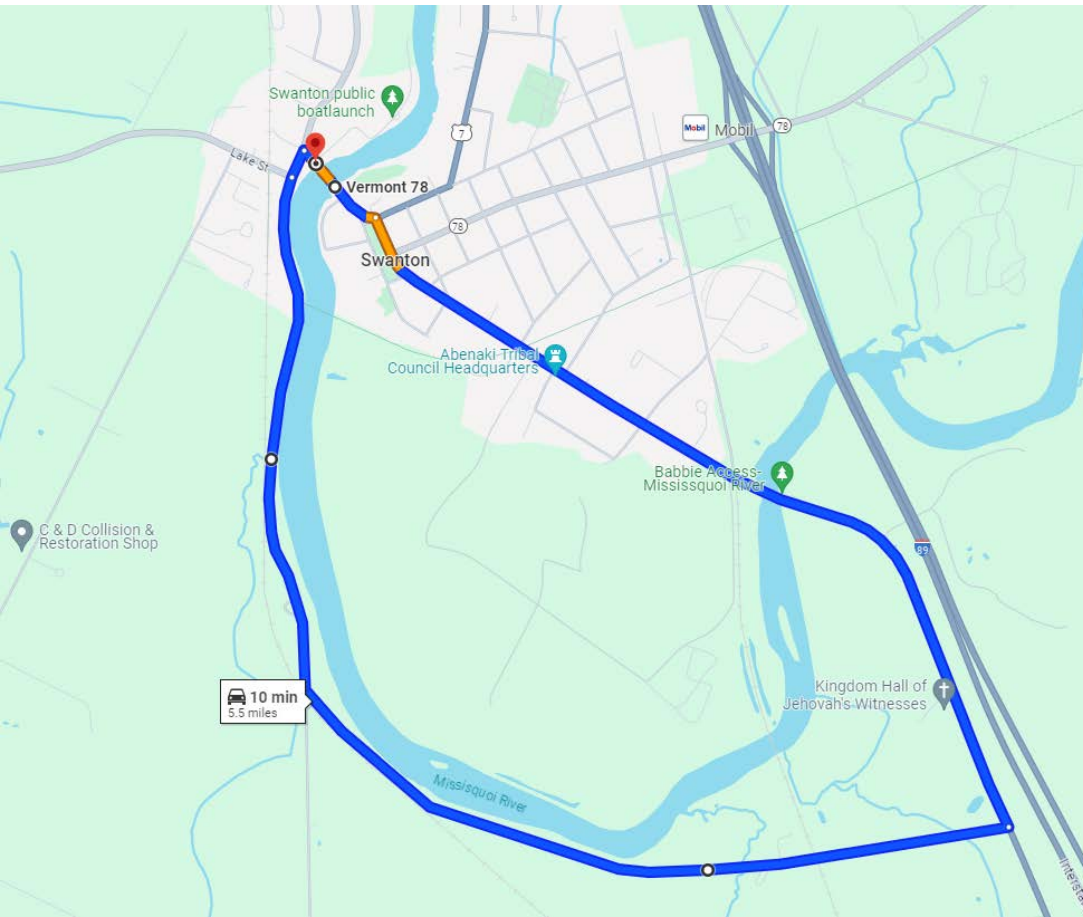
- Initial construction cost
- Traffic impacts
- Extending remaining service life
- Public safety
- Impacts to resources
- ROW impacts
- Utility impacts
- Public input

Act 153 Funding Information

- Municipal owned structure
- Share of project cost reduces depending on scope and TMP

Local Share		
	Road Closed During Construction	Road Open During Construction
Rehabilitation	2.5%	5%
Replacement	5%	10%

Project Alternatives



Village of Swanton Detour Route

- Approximately 5.5 miles long
- Uses South River Street, Beebe Road and Route 7 to reconnect with Depot Street
- Currently planned to be used this summer for repairs on the bridge
- Potential for regional truck detour

Resources & Right-of-Way

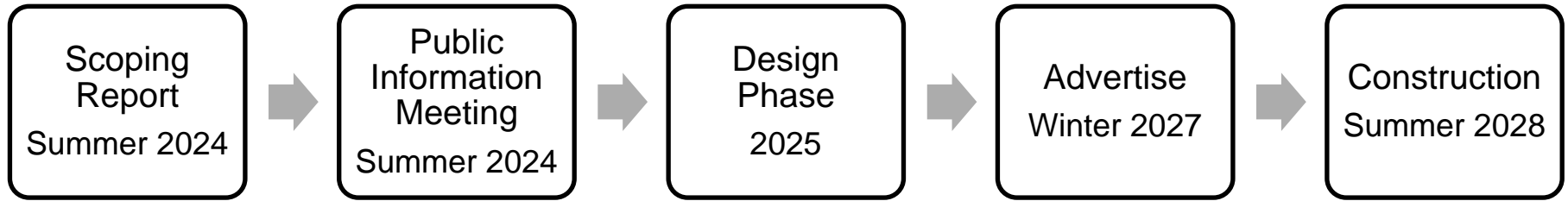
Resource Considerations

- Upstream dam
- No wetlands
- Aquatic species in Missiquoi River, potential time of year restrictions
- Rivers and Lakes
- Archeological Phase 1

Right-of-Way

- Impacts dependent on selected scope and TMP

Anticipated Schedule



Next Steps

- Scoping Report development
- Public Information Meeting
- Incorporation of local input



Your Input is Needed

- Abutters concerns
- Emergency response routes
- Bridge usage and pedestrian usage
- Local events and impacts
- Detour route concerns
- Bridge safety concerns
- Maintenance concerns
- Other concerns

Give us your input!

Laura.Stone@Vermont.gov

tcard@greenintl.com

Thank you for your time!

